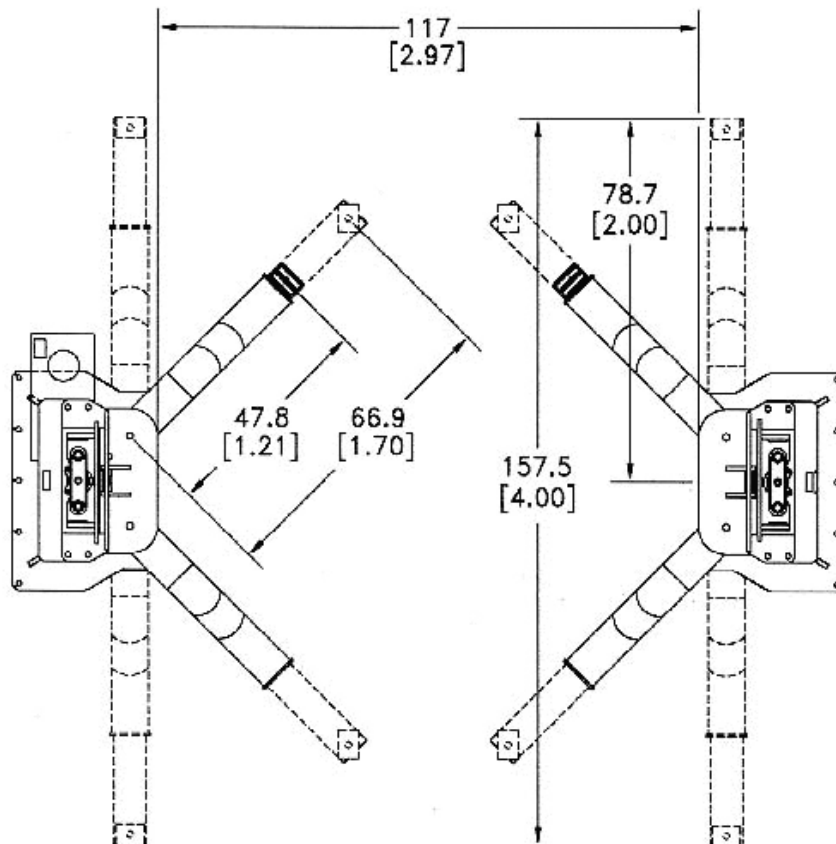
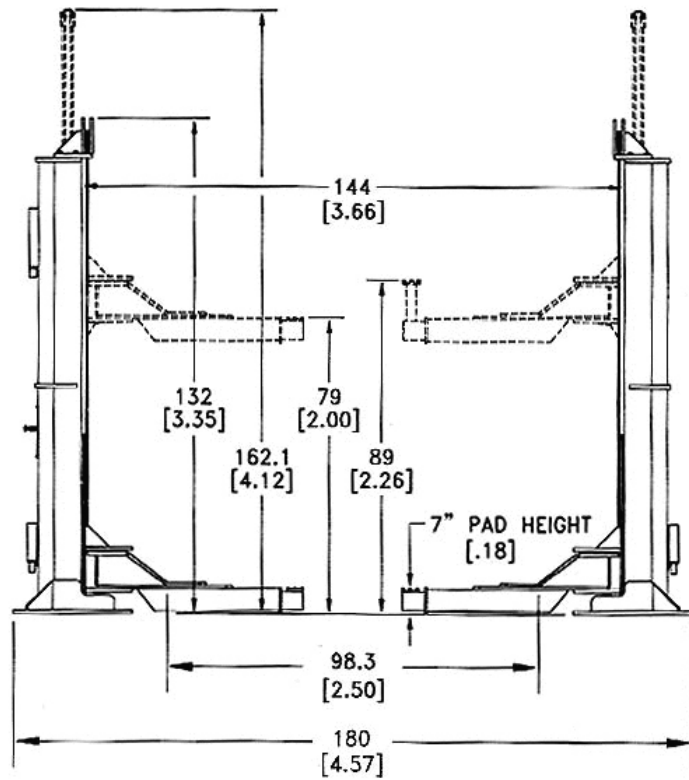


# TP-18/TP-20/TP-26/TP-30 Rough Specifications



**MODEL:****TP-18/TP-20/TP-26/TP-30**

Capacity:	TP-18 - 18,000 lbs. (8164.67Kg) TP-20 - 20,000 lbs. TP-26 - 26,000 lbs. (11793.41Kg) TP-30 - 30,000 lbs. (13607.78 Kg)
Lifting Speed:	142 seconds
Motor Rating:	TP-18 - 3 HP/208-230 VAC, 3 Phase TP-20 - 3 HP/208-230 VAC, 1 Phase (3 Phase optional) TP-26/30 - 5 HP/208-230V, 3- Phase
Synchronization:	Hydraulic fluid displacement using no chains, cables, or overhead obstructions
Arm Pad Height:	TP-18 - 7" (17.8 cm) minimum TP-20 - 5 3/8" (13.6cm) TP-26/30 - 8" (20.32 cm) minimum
Lifting Height (Stroke):	6' (1.83 m)
Arm Height @ Full Rise:	6'7" (2.01m)
Max. Pad Height with Adaptors	: 7'3" (2.21m)
Overall Width:	15' (4.57m)
Width Between Posts:	12' (3.66m)
Width Between Carriage:	9'9" (2.97m)
Column Height:	11' (3.35m)
Max. Cylinder Height:	13'6 1/8" (4.12m)
Overhead Hydraulic Line:	Optional adjustable to any height
Shipping Weight:	TP-18 - 7260 lbs. (3293.08 Kg) TP-20 - 7000 lbs. (3175 Kg) TP-26 - 8880 lbs. (4027.90 Kg) TP-30 - 9300 lbs. (4218.41 Kg)
Anchoring System:	Steel sub frame submerged in 4000 psi concrete, or min 12" thick 4000 psi reinforced concrete
Mechanical Safety Locks:	<b>Infinite Position</b> , interlocked redundant safety systems
Hydraulic Safety Systems:	<b>Automatic; All Position</b>
Swing Arm Restraint:	<b>Automatic</b> upon ascent
Cylinders:	2 (1 per column)
5", 7 1/2", 10" Frame Adaptors (stackable):	4 each included as standard equipment
Carriage Bearings:	(16) 5" (12.7cm) diameter (8 per carriage) double-sealed, self lubricating
Thrust Bearings:	(8) 5" (12.7cm) diameter (4 per carriage) double-sealed, self lubricating
Floor Access Between Posts:	Clear and unobstructed
Warranty:	5 years; Limited lifetime on cylinders*

**Mohawk builds the best products with the finest materials, to the highest standards. Just compare our lifts. Our staff will assist you with a fleet evaluation, design assistance and answer any technical questions you have. We invite your calls.**

Mohawk Lifts are manufactured in compliance the following standards: ANSI, ASME, AISI, ASTM, OSHA, ASA, NEC, AWS and NEMA.