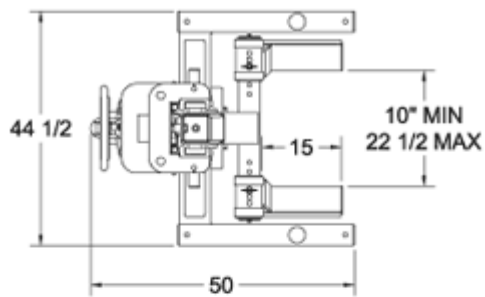
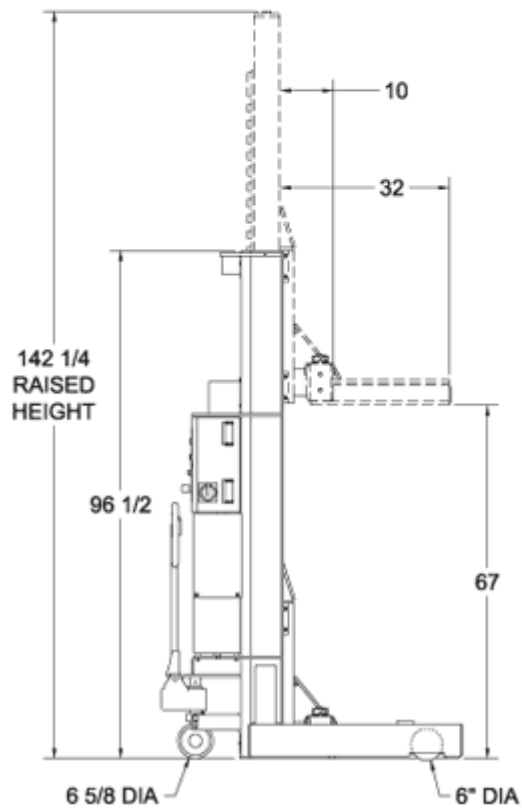
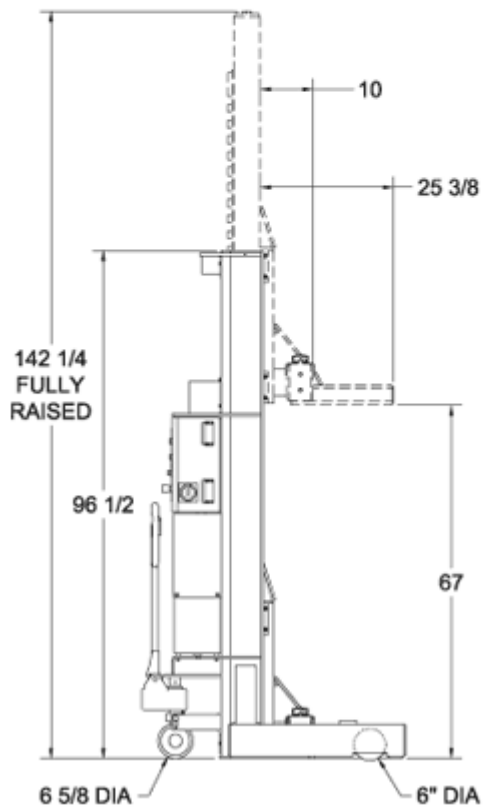
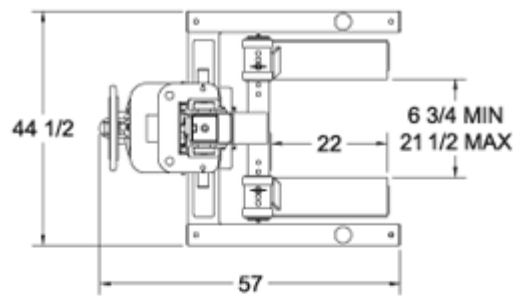


# MOBILE COLUMN LIFT SPECIFICATIONS

15" FORKS



22" FORKS



Mohawk Model MP-18 post shown above

Specifications Subject to Change without Notice

<b><u>MODEL:</u></b>	<b><u>MP-18-15</u></b>	<b><u>MP-18-22</u></b>
<b>Capacity per post:</b>	18,000 lbs.	16,000 lbs.
<b>Lifting Speed:</b>	66 sec.	66 sec.
<b>Motor Rating:</b>	2.5 H.P.	2.5 H.P.
<b>Standard power requirements:</b>	208/240 V, or 440/480 V 3 phase single phase available	
<b>Amperage requirements:</b>	10 (per post)	10 (per post)
<b>Lifting height (stroke):</b>	67"	67"
<b>Lifting mechanism:</b>	Direct drive hydraulic cylinders	
<b>Cylinder protection:</b>	Full steel enclosure	
<b>Clearance between carriage &amp; vehicle:</b>	10"	
<b>Synchronization:</b>	Automatic SIEMENS® PLC controlled	
<b>Lifting forks range:</b>	13" to 24" wheels	
<b>Lifting fork height/angle:</b>	3 1/2" and 28 degrees	
<b>Maximum tire diameter:</b>	48"	
<b>Front Wheels:</b>	6 5/8" sealed roller bearings	
<b>Steering system:</b>	Pallet jack mech. w/OSHA approved handle & pressure relief valve	
<b>Mechanical safety locks:</b>	19 positions starting at 12 "	
<b>External hydraulic safety systems:</b>	Pressure compensated flow control valving & velocity fuses	
<b>Electrical safety systems:</b>	Electronic sensors in each column	
<b>Floor requirements:</b>	Any hard, level surface	
<b>Control voltage:</b>	24 volts	
<b>Warranty:</b>	3 years	

**Available Options Mobile jack stands (spring assisted)**

<b>Model</b>	<b>Range</b>	<b>Capacity per stand</b>
MJS-18-30-18/24/30	18" to 30"	18,000/24,000/30,000
MJS-30-47-18/24/30	30" to 47"	18,000/24,000/30,000
MJS-47-75-18/24/30	47" to 75"	18,000/24,000/30,000

<ul style="list-style-type: none"> <li>• Chassis contact lifting beam</li> <li>• Extended forks</li> <li>• 460 or 575 volt power units</li> <li>• Runways &amp; approach ramps</li> <li>• Remote pendant control</li> <li>• Fork lift adapter</li> <li>• Automotive frame contact adapter</li> </ul>	<ul style="list-style-type: none"> <li>• Winged snow plow adaptor</li> <li>• Wider carriages</li> <li>• Lifting height limiter</li> <li>• Single phase power</li> <li>• Double wide columns</li> <li>• Front to rear bumper adaptor</li> <li>• Heavier capacities on request</li> </ul>
--	---

**Mohawk builds the best products with the finest materials, to the highest standards. Just compare our lifts. Our staff will assist you with a fleet evaluation, design assistance and answer any technical questions you have. We invite your calls.**

Mohawk Lifts are manufactured in compliance with the following standards: ANSI, ASME, AISI, ASTM, OSHA, ASA, NEC, AWG and NEMA.