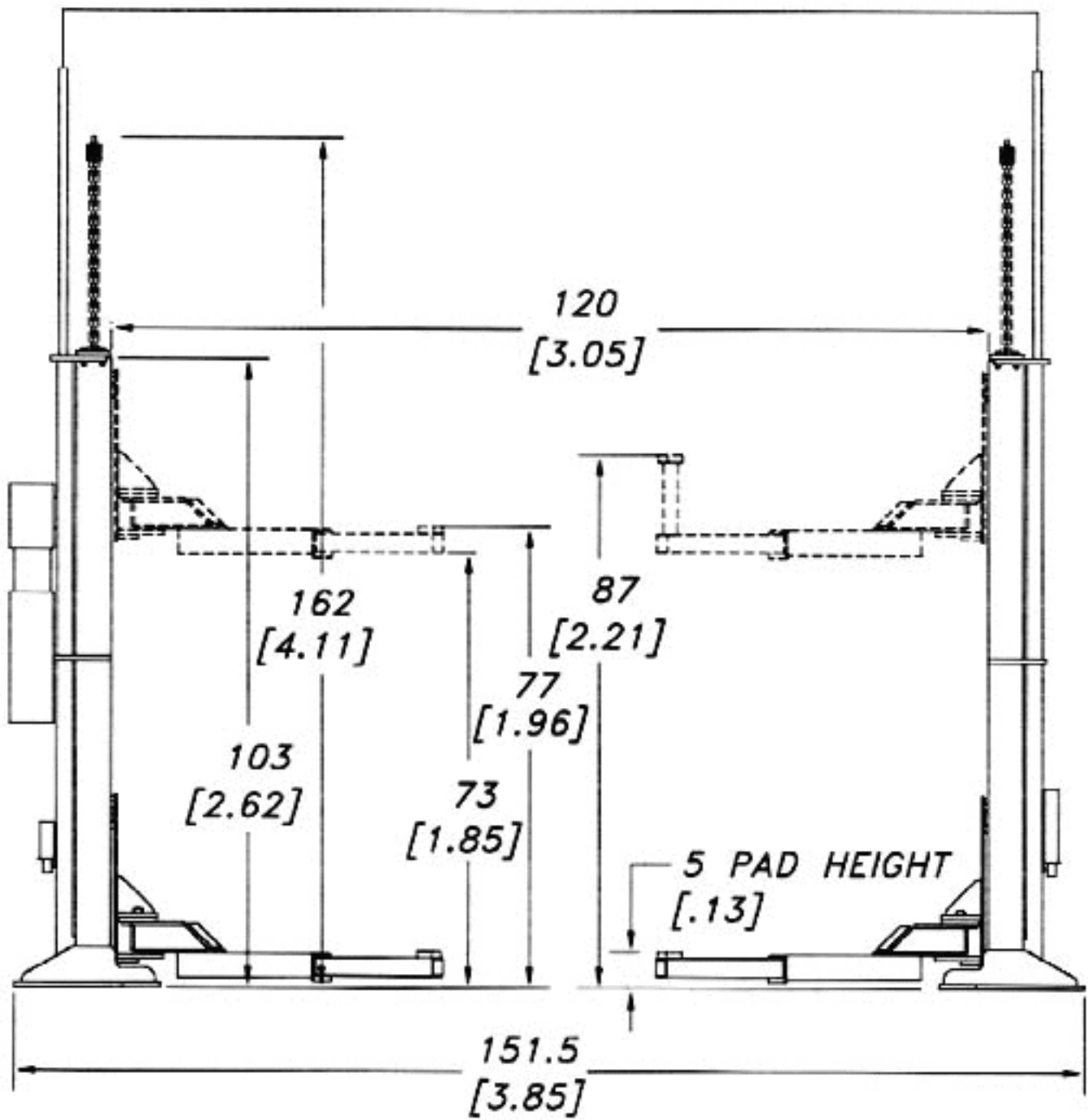
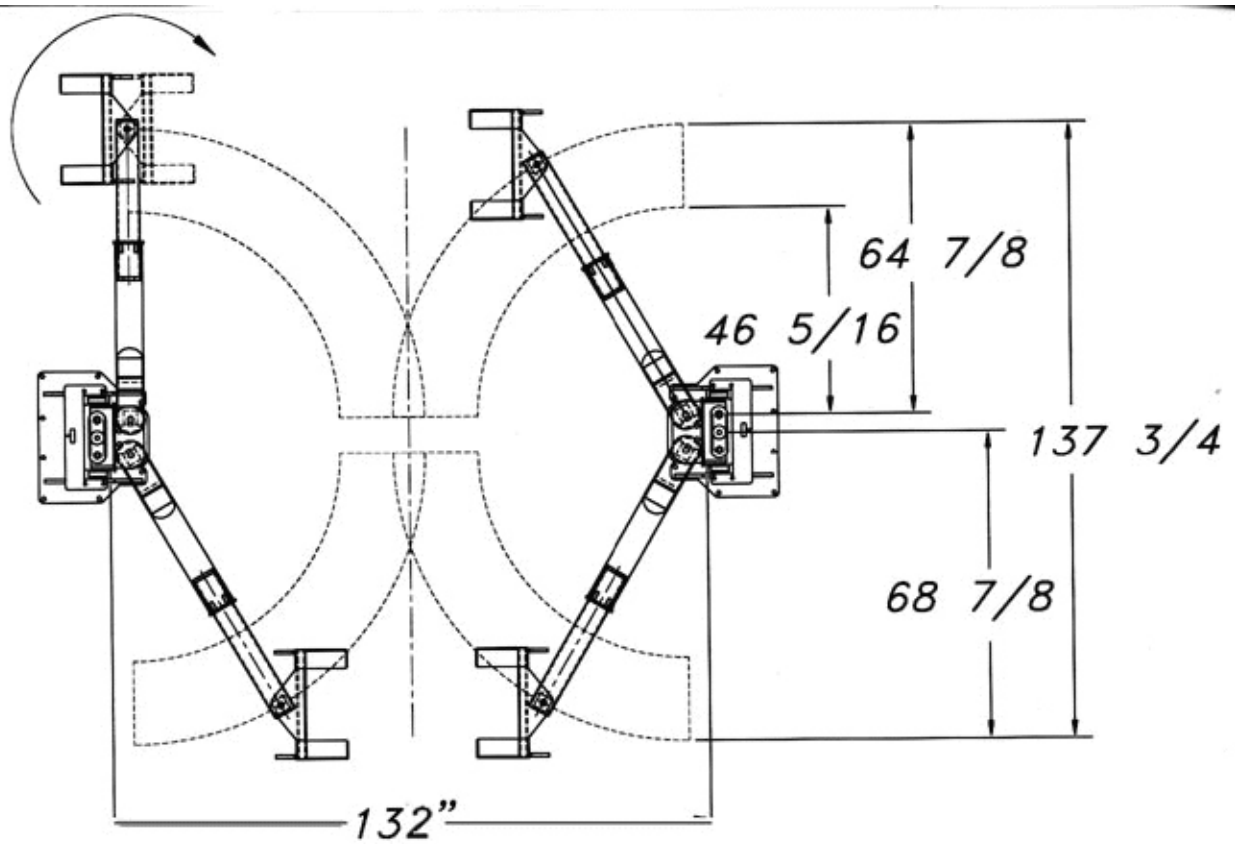
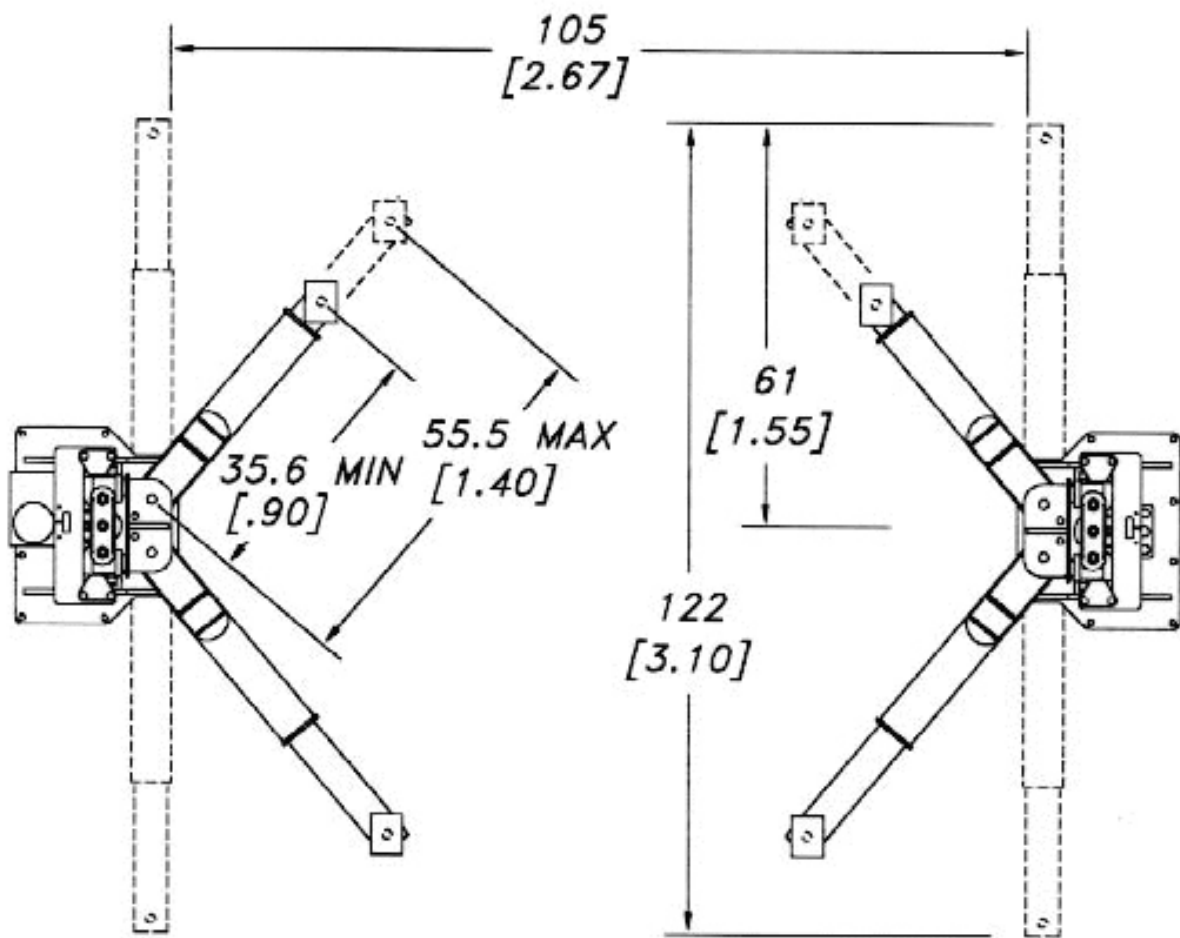


LMF 12 & TP 15 Rough Specifications





MODEL:**LMF-12 & TP-15**

Capacity:	LMF-12 - 12,000 lbs. (5443.11Kg) TP-15 - 15,000 lbs. (6803.90Kg)
Lifting Speed:	100 seconds
Motor Rating:	LMF-12 - 2 HP/208-230 VAC, single-phase (3 phase optional) TP-15 - 3 HP/208-230V, single phase (3-phase optional)
Synchronization:	Hydraulic fluid displacement using no chains, cables, or overhead obstructions
Arm Pad Height:	5" (12.7 cm) minimum
Lifting Height (Stroke):	6' (1.83 m)
Arm Height @ Full Rise:	6'5" (1.96m)
Max. Pad Height with Adaptors:	7'3" (2.21m)
Overall Width:	12'7 1/2" (3.85m) (Adjustable)
Width Between Posts:	10' (3.05m) (Adjustable)
Width Between Lifting Arms:	8'9" (2.67m) (Adjustable)
Column Height:	8'7" (2.62m)
Max. Cylinder Height:	13'6" (4.11m)
Overall Hydraulic Line Height:	15' (4.57m) Standard (adjustable to accommodate any height ceiling or routed in-floor)
Weight:	LMF-12 - 3100 lbs. (1406.13Kg) TP-15 - 3600 lbs. (1632.96Kg)
Concrete Floor Requirements:	4000 PSI (27579.2 kPa) mix 6-1/2" (16.51 cm) depth
Anchoring System:	16 3/4" x 6" (1.91 x 15.24 cm) Wej-it bolts
Mechanical Safety Locks:	Automatic; all position; starting @ 5" (12.7 cm) off the floor
Hydraulic Safety Systems:	Automatic; all position
Swing Arm Restraints:	Automatic upon ascent
Cylinders:	2 (1 per column)
Drive System:	Direct drive (using no cables or chains)
5" Frame Adaptors (stackable):	4 included as standard equipment
7 1/2" Frame Adaptors (stackable):	4 included as standard equipment
Steel Carriage Bearings:	16 4" (10.16cm) diameter (8 per carriage) double-sealed, self lubricating
Floor Access Between Posts:	Clear and unobstructed
Warranty:	5 years; Lifetime on cylinders*

Mohawk builds the best products with the finest materials, to the highest standards. Just compare our lifts. Our staff will assist you with a fleet evaluation, design assistance and answer any technical questions you have. We invite your calls.

Mohawk Lifts are manufactured in compliance the following standards: ANSI, ASME, AISI, ASTM, OSHA, ASA, NEC, AWS and NEMA.

Certified by Automotive Lift Institute to conform with ANSI/ALI ALCTV-1998 Standard. Meets ANSI, NEC, and NEMA safety codes.