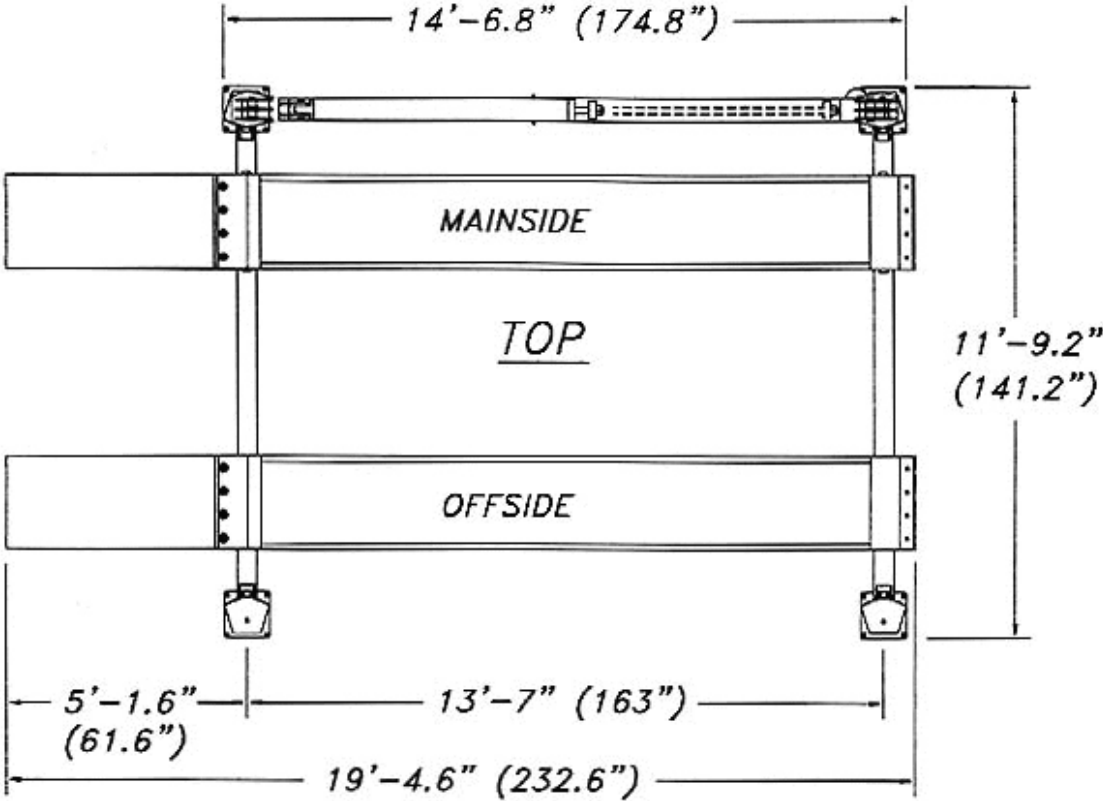
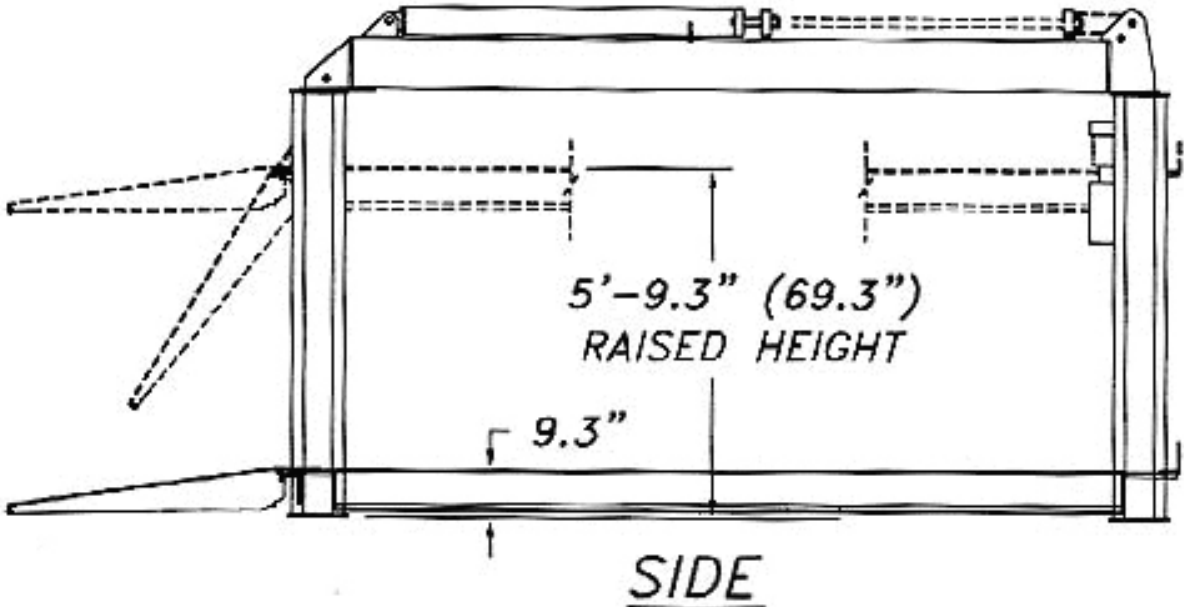
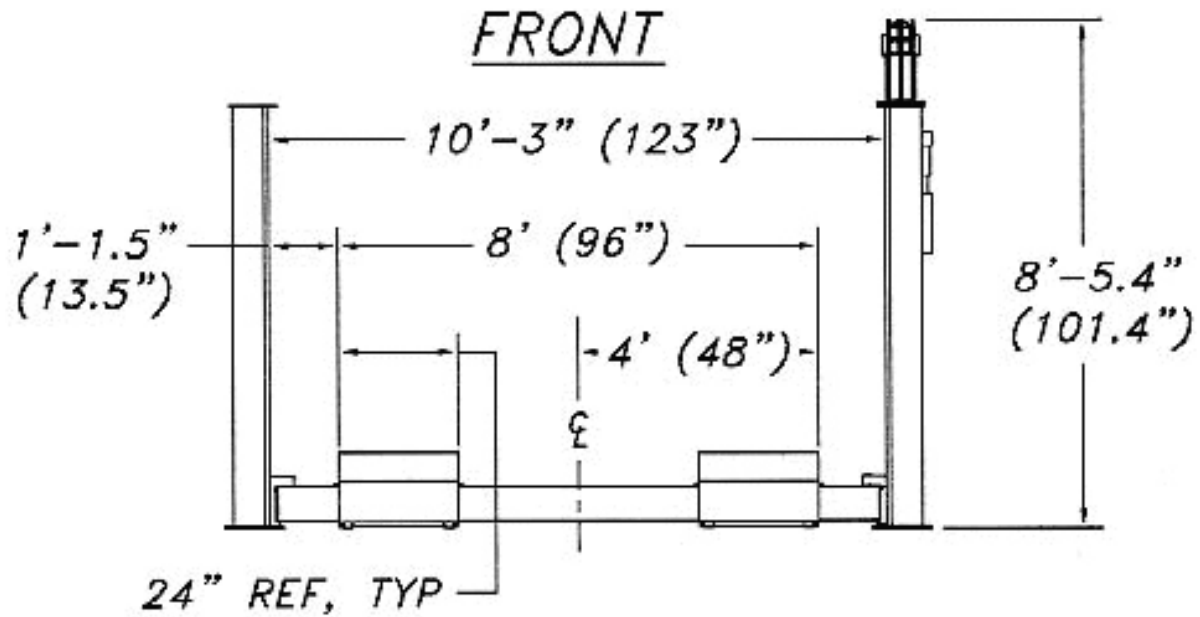


FL 25 Rough Specifications





* SHOWN WITH STANDARD 13' RUNWAYS.

** TOP RAIL MOUNTED ON RIGHT SIDE ON REQUEST AT INSTALLATION.

*** SPECIFICATIONS SUBJECT TO CHANGE WITHOUT NOTICE.

[Go to next page for more specifications](#)

MODEL: FL-25

Capacity: 25,000 lbs.
Lifting Speed: 120 seconds
Motor Rating: 2 HP/220 V Single-Phase (3 phase optional)
Lifting Mechanism: 5" Hydraulic Cylinder Attached to (4) #646 Leaf Chains
Overall Length: 19' 4 5/8"
Overall Width: 11' 9 3/16"
Lifting Stroke: 5'
Height @ Full Stroke: 5' 9 5/16"
Track Width: 24"
Track Length: 13' 7"
Track Adjustment: 4' to 8'
Max. Clearance Between Posts: 10' 3"
Mechanical Safety Release: Single Point
Mechanical Safety Locks: Multi-Positions
Back-Up Hydraulic Safety Systems: Pressure Compensated Flow Controls & Velocity Fuses
Warranty: 5 years; (Excluding Motor/Pump) Lifetime Cylinders Warranty
Lift Weight: 4800 lbs.

Available Options

- 3 phase power:
 - 208/230 3 phase 60 hz/460 volt 3 phase 60 hz
 - 380 volt 3 phase 50 hz/575 volt 3 phase 60 hz
- Rolling hydraulic jacking beam
- Rolling jacking platform
- Air lines plumbed into tracks
- Obstacle sensor package
- 115 volt duplex outlet
- Runway lighting
- Outside tire guides
- Lockable main switch
- Electric solenoid down valve
- Fluorescent runway lighting
- Audible descent alarm
- Drive through ramps

NOTE: Some options are not compatible with one another.

NOTE: Larger capacity lifts available. Mohawk lifts are manufactured in compliance with following standards: ANSI, ASME, AISI, ASTM, OSHA, ASA, NEL, AWG, NEMA.

Mohawk builds the best products with the finest materials, to the highest standards. Just compare our lifts. Our staff will assist you with a fleet evaluation, design assistance and answer any technical questions you have. We invite your calls.